

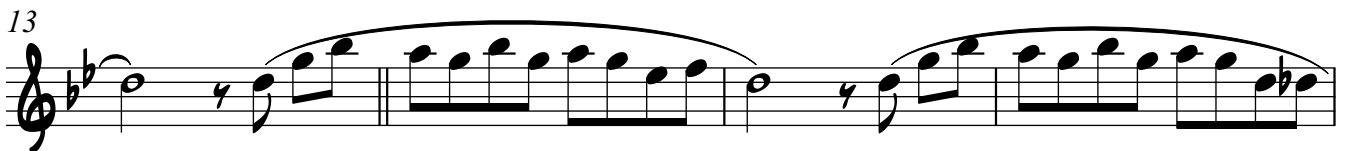
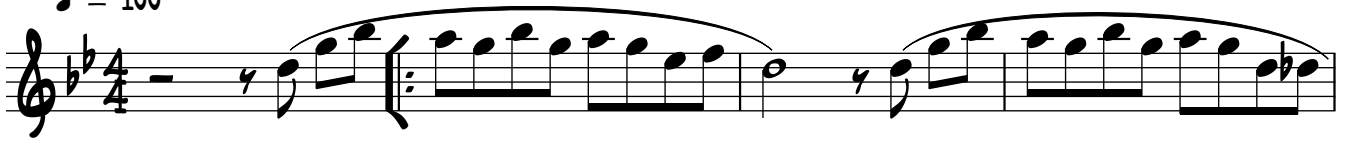
Alto 1°

# El Milagro Del Amor

*The Godfather Film*

Nino Rota  
arr. Willy Urrea

♩ = 100



V.S.

Alto 1°

El Milagro del Amor

25

3

Detailed description: This staff contains measures 25 through 28. It begins with a treble clef and a key signature of three sharps (F#, C#, G#). The melody starts with a half note G4, followed by quarter notes A4, B4, C5, and D5, all under a slur. Measure 26 continues with quarter notes E5, F5, G5, and A5, also under a slur. Measure 27 features a quarter note B5, a quarter note A5, and a quarter note G5. Measure 28 concludes with a quarter note F5, a quarter note E5, and a quarter note D5. A fermata is placed over the final D5. A '3' is written below the staff at the end of the line.

29

Detailed description: This staff contains measures 29 through 31. It continues with the same key signature. Measure 29 has a half note G4, followed by quarter notes A4, B4, C5, and D5 under a slur. Measure 30 has quarter notes E5, F5, G5, and A5 under a slur. Measure 31 has quarter notes B5, A5, and G5. A fermata is placed over the final G5.

32

Detailed description: This staff contains measures 32 through 34. Measure 32 has a half note G4, followed by quarter notes A4, B4, and C5. Measure 33 has quarter notes D5, E5, F5, and G5. Measure 34 has quarter notes A5, B5, and C6. A fermata is placed over the final C6.

35

Detailed description: This staff contains measures 35 through 38. Measure 35 has a half note G4, followed by quarter notes A4, B4, C5, and D5 under a slur. Measure 36 has quarter notes E5, F5, G5, and A5 under a slur. Measure 37 has quarter notes B5, A5, and G5. Measure 38 has quarter notes F5, E5, and D5. A fermata is placed over the final D5.

39

3

rit. . . .

Detailed description: This staff contains measures 39 through 41. Measure 39 has a half note G4, followed by quarter notes A4, B4, and C5. Measure 40 has quarter notes D5, E5, F5, and G5. Measure 41 has quarter notes A5, B5, and C6. A fermata is placed over the final C6. A '3' is written below the staff at the end of the line. The word 'rit.' with a dotted line is written above the staff in the final measure.

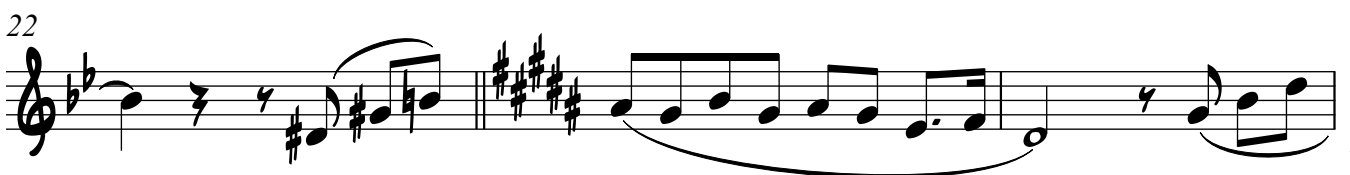
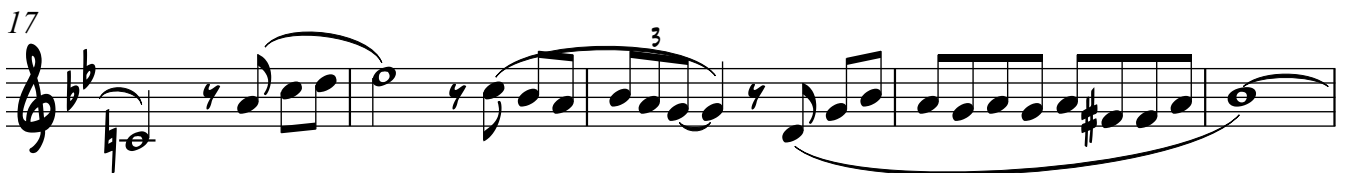
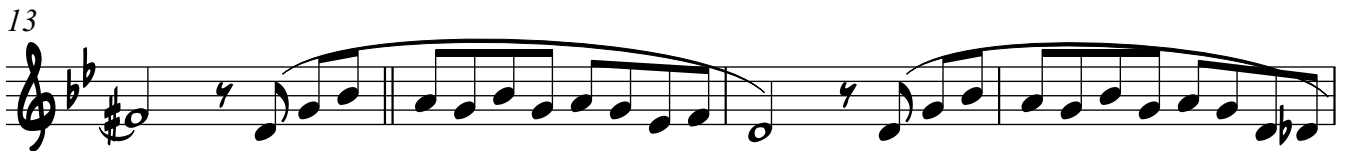
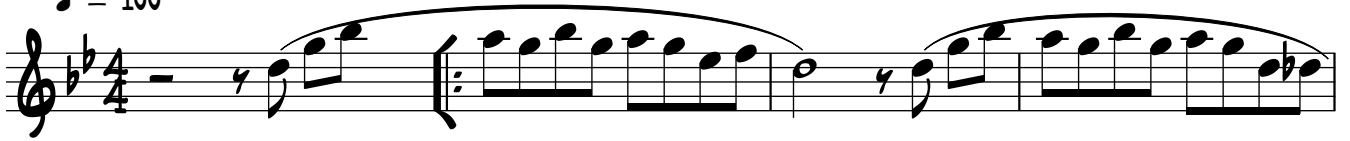
# El Milagro Del Amor

Alto 2°

*The Godfather Film*

Nino Rota  
arr. Willy Urrea

♩ = 100



V.S.

Alto 2°

El Milagro del Amor

25

29

32

35

39

rit. . . . .